

SI 1850

CENTRIFUGAL PUMP



Large tank pump – Hot water

The SI 1850 pump is designed to evacuate heavy and contaminated condensates.

Capable of evacuating up to 1100 l/h, the SI 1850 pump is suitable for air conditioning units and industrial refrigeration displays.

Strong, the SI 1850 tolerates charged, high temperature and acidic condensates ($\text{pH} > 3.4$) produced by gas condensing boilers

BENEFITS

- **High performance**

- Integrated big tank of 3,8 liters. (1 gal)
- Can discharge condensates **up to 10m**.
- Jusqu'à **1100l/h**.

- **High resistance**

- Suitable for mild acid and hot condensate. ($\text{pH} \geq 3.4$ et $T \leq 87^\circ\text{C}$)
- Thermal protection at 135°C . (**auto-reset**)

- **Safety**

- Normally closed alarm contact.

KIT CONTENTS



- One-piece centrifugal pump with tank (3.8L)
- Integrated barb end check valve \varnothing ext. 10 mm (3/8")

APPLICATIONS

- Column air conditioning units • Multi cassettes
- Gas condensing boilers • High efficiency gas furnace
- Refrigerating display cabinets • Evaporators • Ducted units



TECHNICAL SPECIFICATION

Max. flow rate	1100 l/h
Max. discharge head	10 m
Max pressure	11 m (flowrate =0)
Sound level in application at 1m(3.3ft): ≤ 66 dBA (Measured in Sauermann acoustic lab, pump operating with water)	
Mains supply	230V~ 50Hz - 220 W
Detection levels	ON : 81mm, OFF : 48mm, Safety : 101mm
Safety switch	NC 4 A resistive – 250V
Max. condensate temperature	87°C
Max. condensate acidity	pH > 3.4 (Gas condensing boilers)
Thermal protection (overheating)	135° C (auto-reset)
Operating conditions	100% - Continuous duty
Protection	IP20
Safety standards	CE and EAC
RoHS directive	Compliant
WEEE directive	Compliant
Pump dimensions	L305 x l 152 x H 257 mm
Weight (including box)	5.9 kg
Packaging	3 pcs

ACTUAL FLOW RATES (l/h)

Vertical Discharge head	Total tube length (Ø int. 10 mm, 3/8")			
	5 m	10 m	20 m	30 m
1 m	750	590	375	285
2 m	675	545	345	270
3 m	600	500	310	255
4 m	520	460	285	235
5 m	450	410	255	215
6 m		355	225	190
7 m		300	185	160
8 m		240	145	125
9 m		170	100	85
10 m		85	60	45

RECOMMENDED ACCESSORIES



Hose Ø int. 10mm (3/8")

ACC 00125 : 25 m

ACC 00126 : braided, 25 m



Install kit

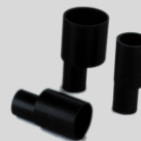
Adaptors

Ø int. 24/25 mm: 1 x ACC 00225

Ø int. 32 mm: 1 x ACC 00230

Ø int. 40 mm: 1 x ACC 00240

ACC 00110



Adaptors

Ø int. 24/25 mm: ACC 00225

Ø int. 32 mm: ACC 00230

Ø int. 40 mm: ACC 00240



Float detector

Used to operate an additional alarm or switch on the pump.

ACC 00601