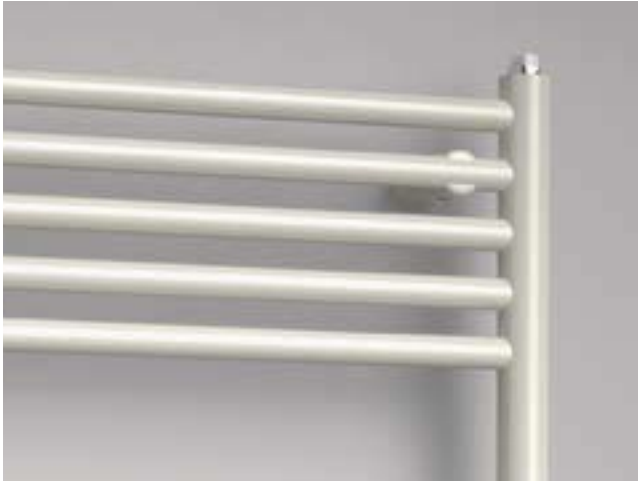


PALMYRA PLUS



PALMYRA PLUS

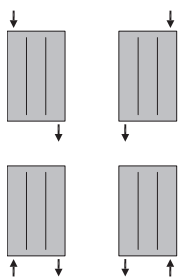
Material	steel pipes \varnothing 35 mm / steel pipes \varnothing 22 mm
Connection thread	4 × G1/2"
Testing overpressure	1,3 MPa
Max. operating overpressure	1,0 MPa
Max. operating temperature	110 °C
Number of pipes	16, 25, 38



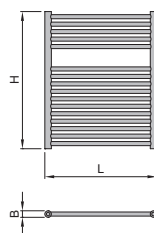
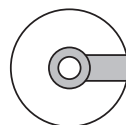
PALMYRA PLUS 1175 × 600

Type H/L [mm]	Depth B [mm]	Weight [kg]	Water capacity [l]	Temperature exponent [n]	Heating Output [W]			Recommended power input paint [W]	Recommended power input chrome [W]	Connection span [mm]
					75/65/20 °C	70/55/20 °C	55/45/20 °C			
735/600	35	8,0	4,4	1,172	386	319	212	400	300	565
1175/600	35	12,5	7,0	1,272	643	523	336	600	400	565
1775/600	35	18,9	10,6	1,408	996	792	485	1000	700	565

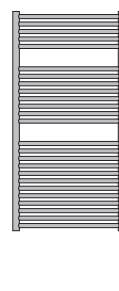
Thermal power measuring follows in accordance with EN 442.
 Chrome surface treatment reduces heating capacity by ~30 %.
 Accessories (page 64, 65 and 66) is not part of the radiator.



Connection options



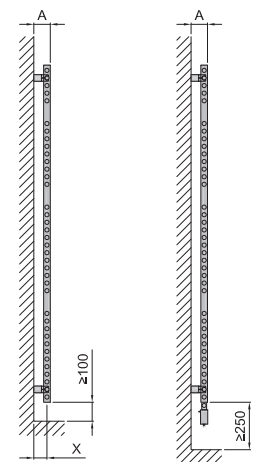
DPAP 0735 0600...



DPAP 1175 0600...



DPAP 1775 0600...



	A [mm]	X [mm]
Plastic brackets (RAL 9006, 9016)	92-102	74-74
Metal brackets (Other colours)	87-97	69-79